

Brett Weinblatt

Vice President
m 410.961.1601
brett.weinblatt@compass.com

Ralph Hanan

Vice President
m 908.433.6624
ralph.hanan@compass.com

PRIME RETAIL SPACE

412 Broadway New York, NY 10013

Prime retail opportunity available
East Block between Canal and Walker St.



Availability

2,000 - 4,400 Square Feet on the Ground
4,400 Square Feet in the Lower Level

Frontage

20' on Broadway
Ceiling Height
16'-17' Foot Ceilings

Rent

Upon Request

Neighboring Tenants

Chipotle, Duane Reade, Paris Baguette, Canal Street Market, OMG, Starbucks, Café Bari, Verizon, AT&T Bank of America, Steve Madden, Chase Bank, McDonald's, Pearl River Mart, Canal Street Market, Necessary Clothing

Transportation

Subway Canal Street Station
Servicing the J,Z,N, Q, R and 6 Subway lines
15,227,129 annual riders

Notes

- At the crossroads of Soho and Tribeca
- Easily accessible by mass transit, located steps away from the extremely busy corner intersection of Canal and Broadway.

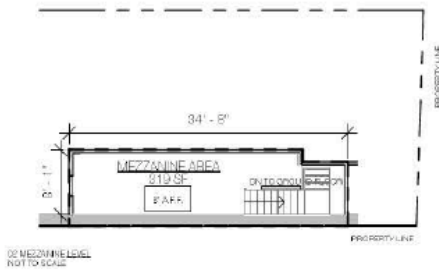
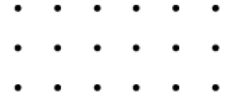
Brett Weinblatt

Vice President
 m 410.961.1601
 brett.weinblatt@compass.com

Ralph Hanan

Vice President
 m 908.433.6624
 ralph.hanan@compass.com

412 Broadway New York, NY 10013



GROUND FLOOR RETAIL CELLAR AREA	4288 SF
2ND FLOOR AREA	5362 SF
MEZZANINE AREA	5119 SF
Grand Total	15089 SF

PLEASE NOTE:
 ALL DIMENSIONS ARE APPROXIMATE.
 ACTUAL SURVEYS TO BE FIELD VERIFIED.

412 BROADWAY 412 BROADWAY, NEW YORK, NY 10013

